

Online appendix (Figures)

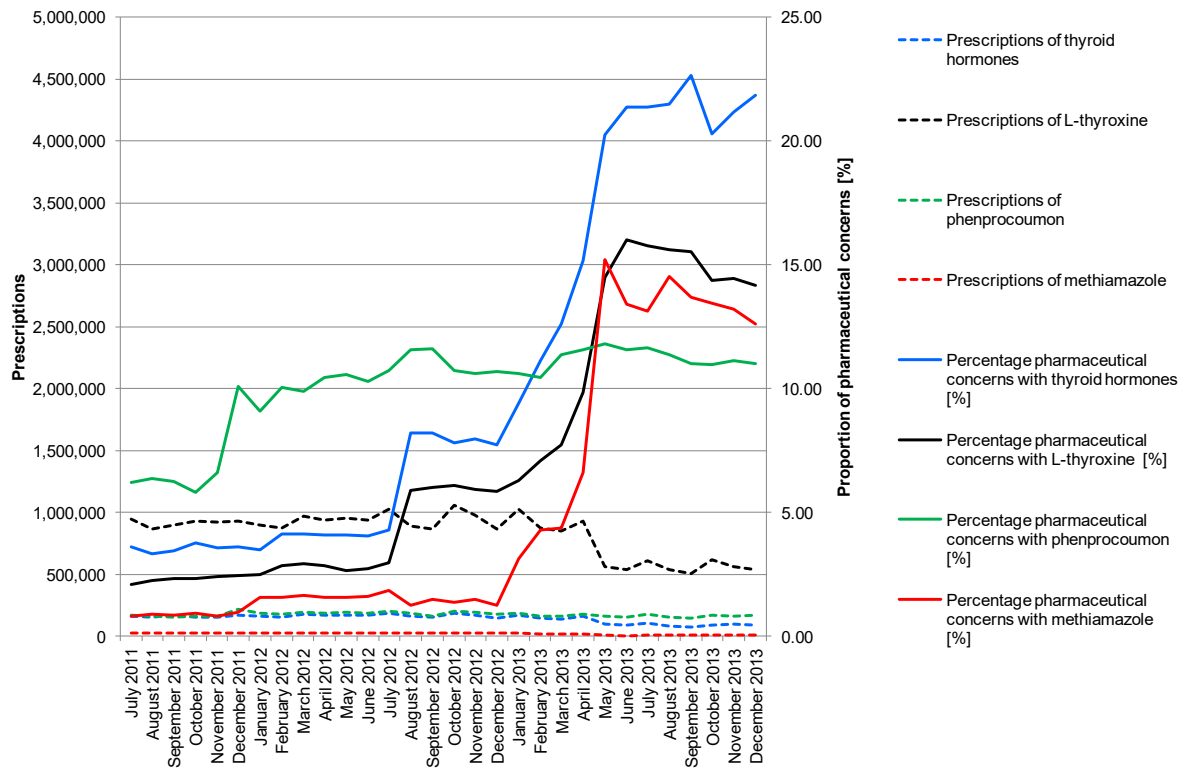


Figure a). Prescriptions where exchange for a product under rebate contract would have been possible (left y-axis) and proportion of prescriptions with documented pharmaceutical concerns of those prescriptions (right y-axis) for drugs with a narrow therapeutic index or variable bioavailability between July 2011 and December 2013.

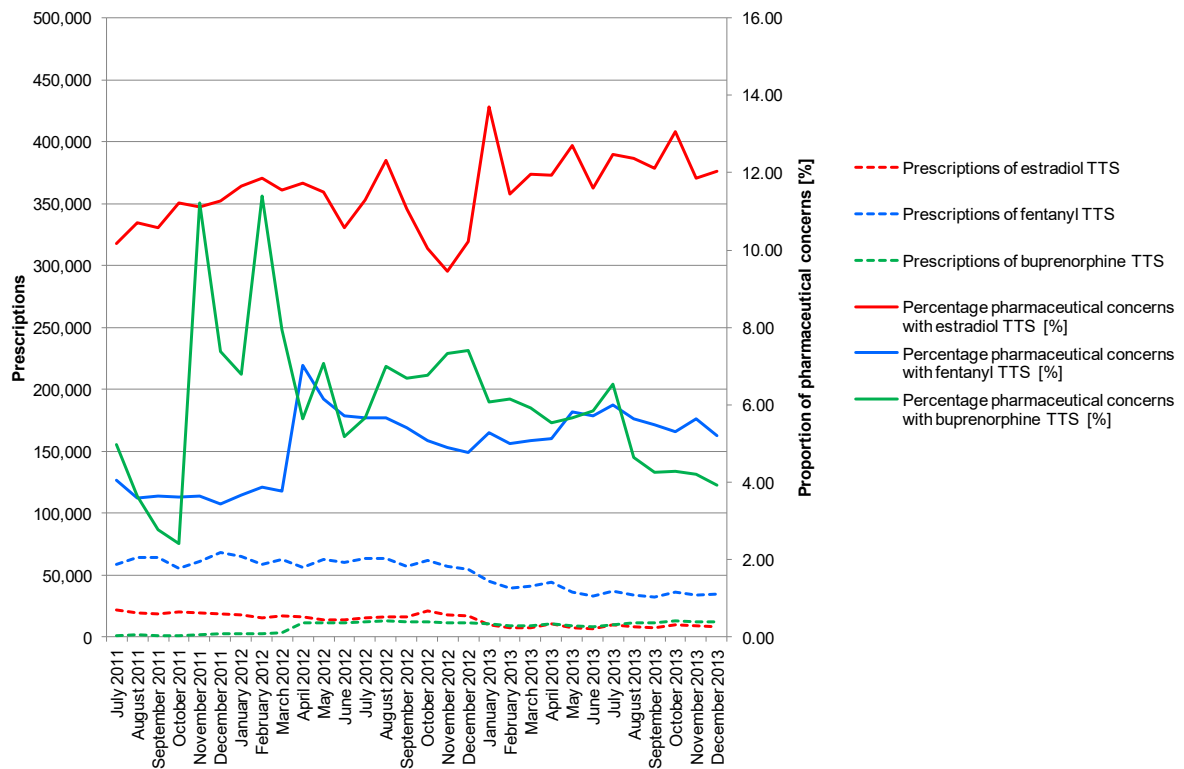


Figure b). Prescriptions where exchange for a product under rebate contract would have been possible (left y-axis) and proportion of prescriptions with documented pharmaceutical concerns of those prescriptions (right y-axis) for drugs with the dosage form transdermal therapeutic system (TTS) between July 2011 and December 2013.

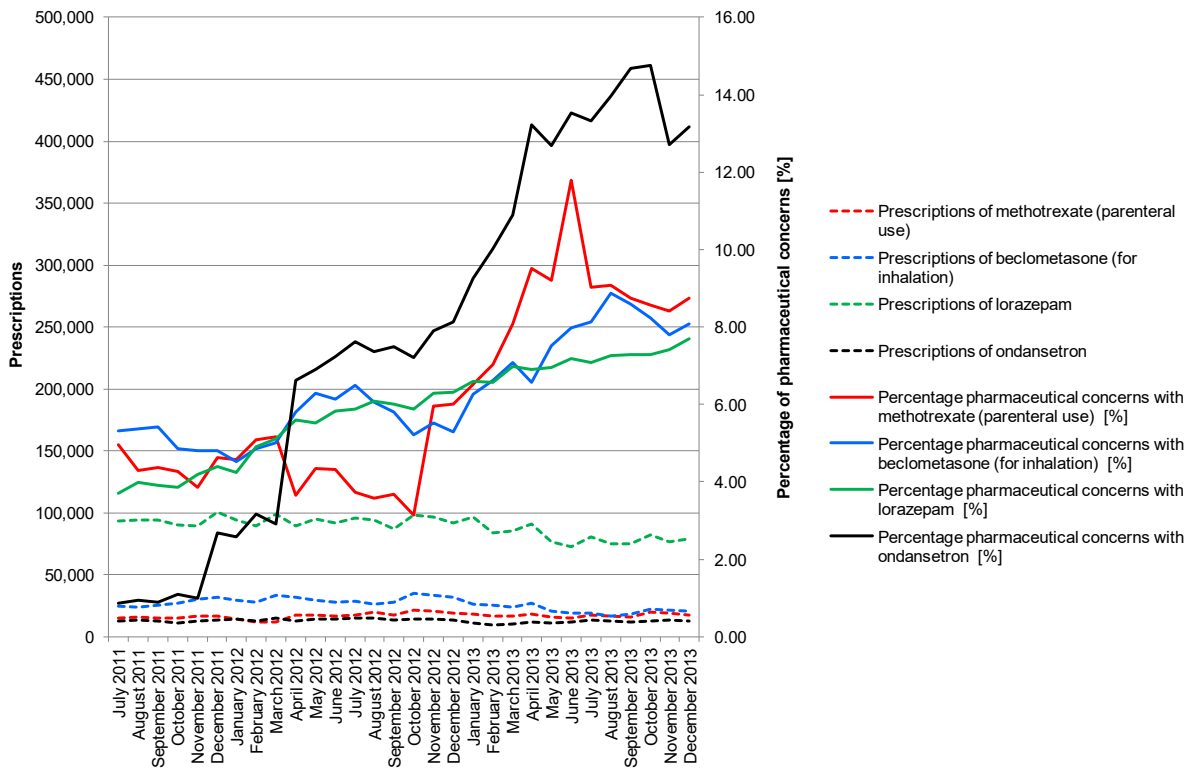


Figure c). Prescriptions where exchange for a product under rebate contract would have been possible (left y-axis) and proportion of prescriptions with documented pharmaceutical concerns of those prescriptions (right y-axis) for methotrexate for parenteral use, beclomethasone for inhalation, lorazepam and ondansetron between July 2011 and December 2013.

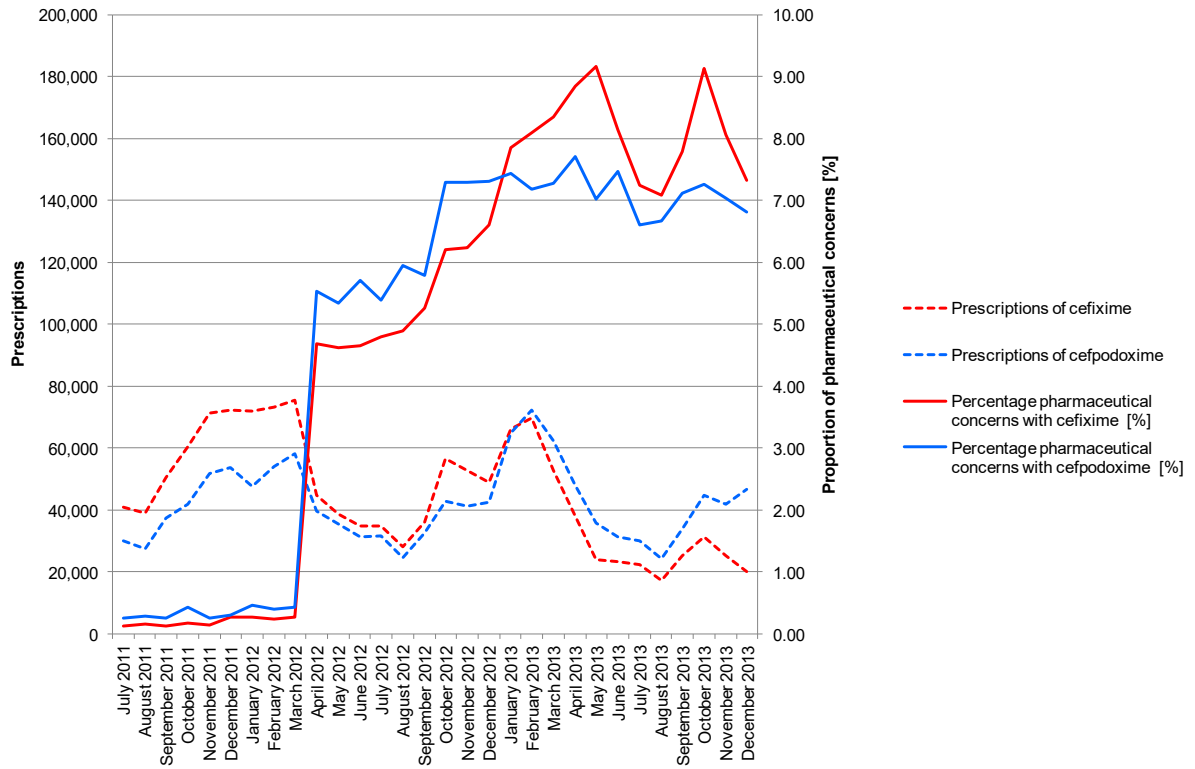


Figure d). Prescriptions where exchange for a product under rebate contract would have been possible (left y-axis) and proportion of prescriptions with documented pharmaceutical concerns of those prescriptions (right y-axis) for drugs with different package sizes between the prescribed (and dispensed) products (cephalosporin antibiotics) and the products listed in rebate contracts between July 2011 and December 2013.

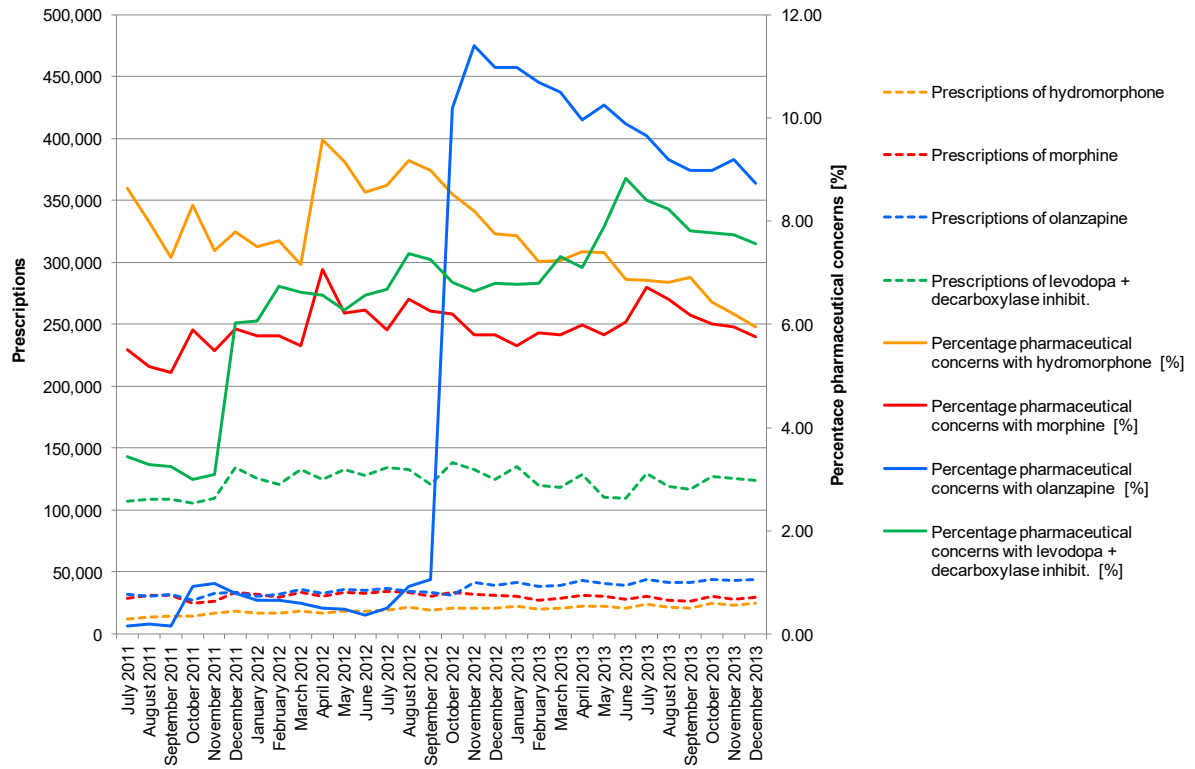


Figure e). Prescriptions where exchange for a product under rebate contract would have been possible (left y-axis) and proportion of prescriptions with documented pharmaceutical concerns of those prescriptions (right y-axis) for drugs intended to treat severe disease states (e.g., schizophrenia, severe pain, Parkinson disease) between July 2011 and December 2013.