

**Online Appendix 1. Validated questionnaire to assess personal phenotypic characteristics, photoprotection use, dermatological medical control and skin cancer risk factors.**

# save your own skin, seek advice

Name and surname ..... Age ..... Gender  male  female

Hair colour at 18 years old  fair  brown  black  red hair  uncertain

Eye colour  hazel  green  greyish  black  mixed  uncertain

Photo type  I  II  III  IV  V  VI

Have you been to the doctor's because of skin problems during the last two years?  yes  no

If so, which healthcare practitioner did you see?

general practitioner  dermatologist  other (specify) .....  uncertain

Did you receive an all-over body skin examination?  yes  no

Last skin check up date month ..... year .....  uncertain

Do you use sunscreen when you are exposed to sun?  sometimes  usually  always  never

If you use sunscreen, which SPI do you use?

SPI < 15  SPI 15  SPI 30  SPI 50+  uncertain

You normally apply your sunscreen

at home, before going out  on the beach or by the pool  before playing sports  I do not use sunscreen

If you don't use always sunscreen, state the reason why

because it is expensive  because it is uncomfortable to use  because I do not get burnt  because I do not sunbathe

because it irritates my eyes  because I do not remember to use it  other reasons (specify) .....

Family history of skin cancer (R1)  yes  no

Personal history of skin cancer (R1)  yes  no

More than 10 melanocytic lesions on a single arm (R1)  yes  no  not checked

Chronically sun-damaged skin (on scalp, face and arms) (R1)  yes  no  not checked

Self-reported skin cancer lesions similar to those on atlas (R2)  yes  no  uncertain

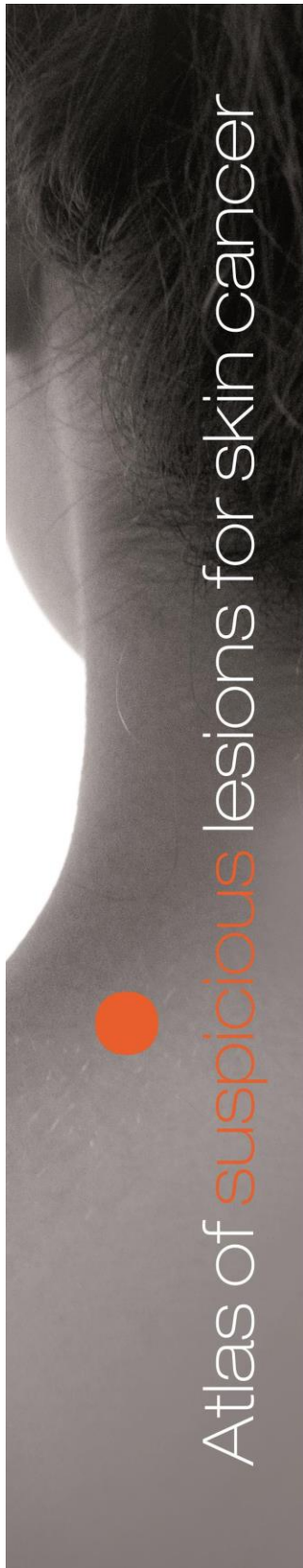
## RECOMMENDATION

R1  During your next appointment with your doctor, ask for a skin checkup or schedule one within the next year

R2  If the lesion has not been seen recently by a dermatologist, schedule a skin checkup urgently

How do you rate pharmacists performing disease prevention activities? 😞  1  2  3  4  5 😊

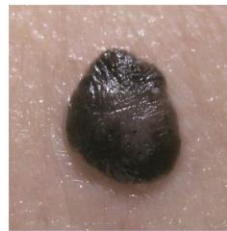
**Online Appendix 2. Atlas containing images of skin cancer suspicious lesions.**



If the user reports a lesion similar to any of the ones depicted in these images on any part of his/her body



A black or brown mole, that is irregular or has grown



A lesion on the face or the body that does not heal and has bled in the last few months



An irregularly shaped and coloured mole on the face  
A spot under the nail



A hidden mole between toes or fingers